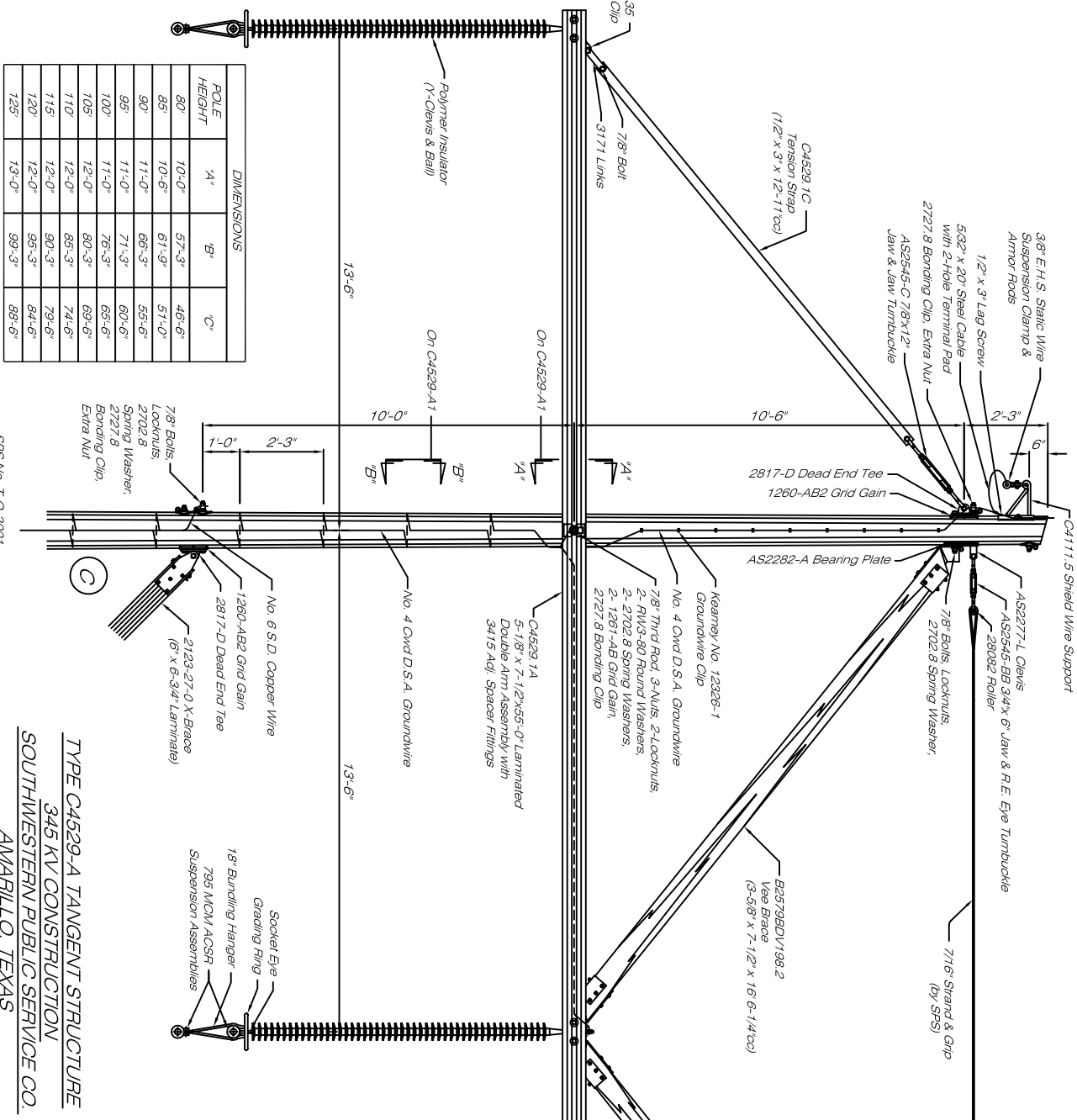


- NOTES:**
1. Poles shall be Class 1 unless specified otherwise.
 2. Pole hole depth **MUST** be accurate. When holes do not allow structure to be even and level, the Deep Hole shall be backfilled and tamped.
 3. Ground Wire Clips shall be two (2) feet apart except for above bottom of top X-brace to pole top where they shall be one (1) foot apart.
 4. There shall be no more than **ONE** splice in the Ground Wire above groundline and **NO** splices below groundline.
 5. When installing Ground Wire Clips avoid cracks and crevices. Clips **MUST** be installed in solid wood.
 6. Single Piece of Anchoring Leads of No. 6 S.D. Copper SHALL be installed as shown on elevation and in Sectioned numbers shown are Hughes Brothers unless otherwise stated.
 7. All material numbers shown are Hughes Brothers unless otherwise stated.



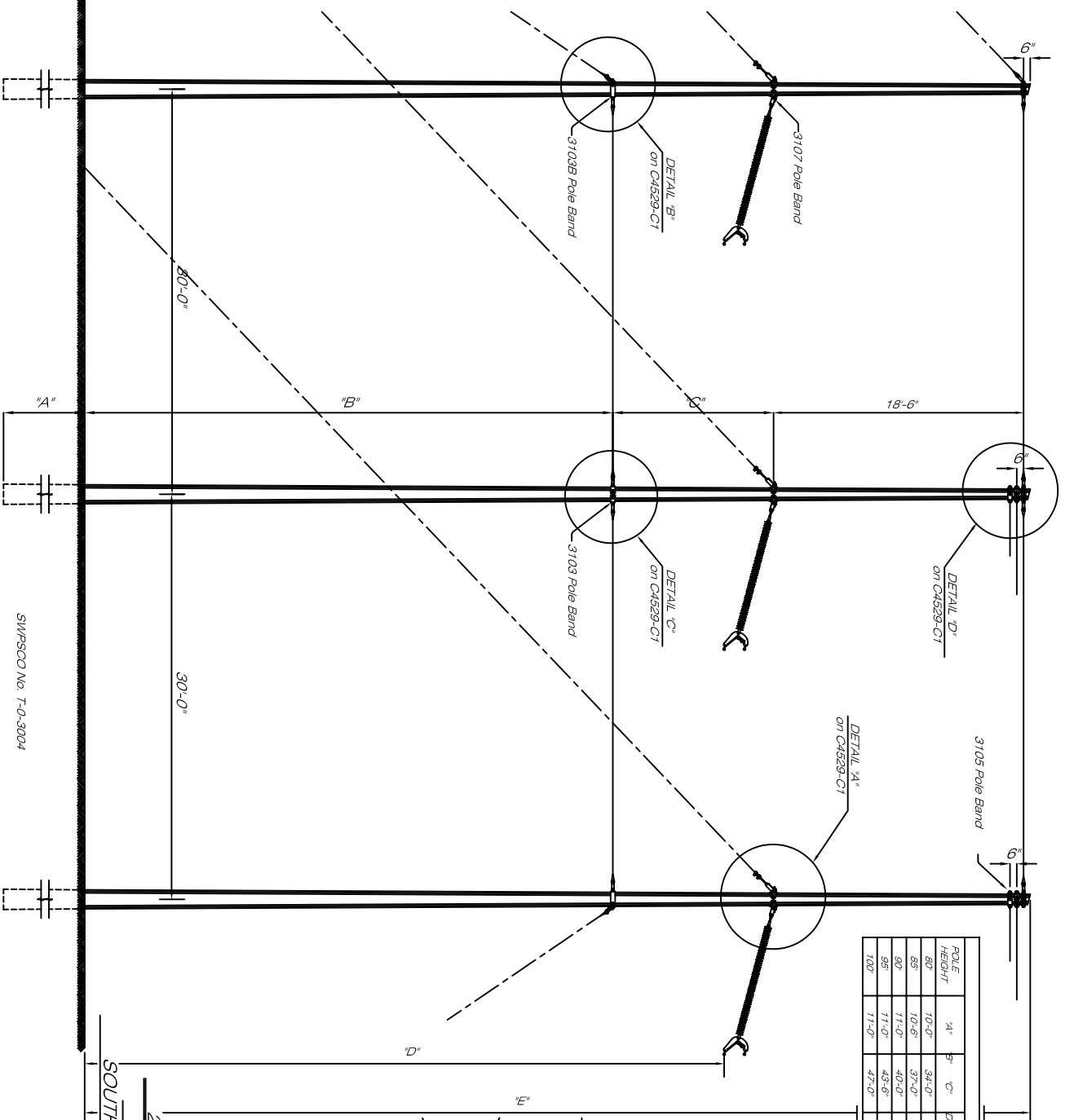
DIMENSIONS			
POLE HEIGHT	A'	B'	C'
80	10'-0"	57'-3"	46'-6"
85	10'-6"	61'-9"	51'-0"
90	11'-0"	66'-3"	55'-6"
95	11'-0"	71'-3"	60'-6"
100	11'-0"	76'-3"	65'-6"
105	12'-0"	80'-3"	69'-6"
110	12'-0"	85'-3"	74'-6"
115	12'-0"	90'-3"	79'-6"
120	12'-0"	95'-3"	84'-6"
125	13'-0"	99'-3"	88'-6"

SPS No. T-O-3001

TYPE C4529-A TANGENT STRUCTURE
345 KV CONSTRUCTION
SOUTHWESTERN PUBLIC SERVICE CO.
AMARILLO, TEXAS

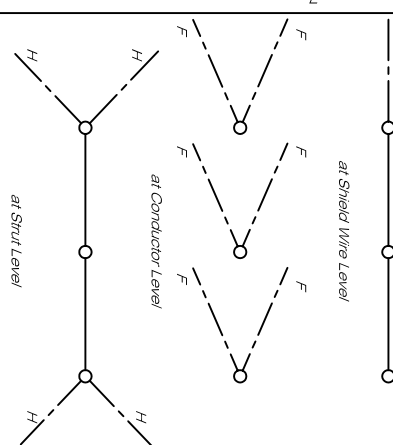
CONFIDENTIAL
 This document includes information that is proprietary to Hughes Brothers and shall not be disclosed or used except as expressly authorized.

Revisions	Drawn	Date
1-30-1980 C4529-A	DP/SSS	12-2-83 HBI
2-10-1980 C4529-A		
3-10-1980 C4529-A		
4-10-1980 C4529-A		
5-10-1980 C4529-A		
6-10-1980 C4529-A		
7-10-1980 C4529-A		
8-10-1980 C4529-A		
9-10-1980 C4529-A		
10-10-1980 C4529-A		
11-10-1980 C4529-A		
12-10-1980 C4529-A		
1-10-1981 C4529-A		
2-1-1981 C4529-A		
3-1-1981 C4529-A		
4-1-1981 C4529-A		
5-1-1981 C4529-A		
6-1-1981 C4529-A		
7-1-1981 C4529-A		
8-1-1981 C4529-A		
9-1-1981 C4529-A		
10-1-1981 C4529-A		
11-1-1981 C4529-A		
12-1-1981 C4529-A		
1-1-1982 C4529-A		
2-1-1982 C4529-A		
3-1-1982 C4529-A		
4-1-1982 C4529-A		
5-1-1982 C4529-A		
6-1-1982 C4529-A		
7-1-1982 C4529-A		
8-1-1982 C4529-A		
9-1-1982 C4529-A		
10-1-1982 C4529-A		
11-1-1982 C4529-A		
12-1-1982 C4529-A		
1-1-1983 C4529-A		
2-1-1983 C4529-A		
3-1-1983 C4529-A		
4-1-1983 C4529-A		
5-1-1983 C4529-A		
6-1-1983 C4529-A		
7-1-1983 C4529-A		
8-1-1983 C4529-A		
9-1-1983 C4529-A		
10-1-1983 C4529-A		
11-1-1983 C4529-A		
12-1-1983 C4529-A		
1-1-1984 C4529-A		
2-1-1984 C4529-A		
3-1-1984 C4529-A		
4-1-1984 C4529-A		
5-1-1984 C4529-A		
6-1-1984 C4529-A		
7-1-1984 C4529-A		
8-1-1984 C4529-A		
9-1-1984 C4529-A		
10-1-1984 C4529-A		
11-1-1984 C4529-A		
12-1-1984 C4529-A		
1-1-1985 C4529-A		
2-1-1985 C4529-A		
3-1-1985 C4529-A		
4-1-1985 C4529-A		
5-1-1985 C4529-A		
6-1-1985 C4529-A		
7-1-1985 C4529-A		
8-1-1985 C4529-A		
9-1-1985 C4529-A		
10-1-1985 C4529-A		
11-1-1985 C4529-A		
12-1-1985 C4529-A		
1-1-1986 C4529-A		
2-1-1986 C4529-A		
3-1-1986 C4529-A		
4-1-1986 C4529-A		
5-1-1986 C4529-A		
6-1-1986 C4529-A		
7-1-1986 C4529-A		
8-1-1986 C4529-A		
9-1-1986 C4529-A		
10-1-1986 C4529-A		
11-1-1986 C4529-A		
12-1-1986 C4529-A		
1-1-1987 C4529-A		
2-1-1987 C4529-A		
3-1-1987 C4529-A		
4-1-1987 C4529-A		
5-1-1987 C4529-A		
6-1-1987 C4529-A		
7-1-1987 C4529-A		
8-1-1987 C4529-A		
9-1-1987 C4529-A		
10-1-1987 C4529-A		
11-1-1987 C4529-A		
12-1-1987 C4529-A		
1-1-1988 C4529-A		
2-1-1988 C4529-A		
3-1-1988 C4529-A		
4-1-1988 C4529-A		
5-1-1988 C4529-A		
6-1-1988 C4529-A		
7-1-1988 C4529-A		
8-1-1988 C4529-A		
9-1-1988 C4529-A		
10-1-1988 C4529-A		
11-1-1988 C4529-A		
12-1-1988 C4529-A		
1-1-1989 C4529-A		
2-1-1989 C4529-A		
3-1-1989 C4529-A		
4-1-1989 C4529-A		
5-1-1989 C4529-A		
6-1-1989 C4529-A		
7-1-1989 C4529-A		
8-1-1989 C4529-A		
9-1-1989 C4529-A		
10-1-1989 C4529-A		
11-1-1989 C4529-A		
12-1-1989 C4529-A		
1-1-1990 C4529-A		
2-1-1990 C4529-A		
3-1-1990 C4529-A		
4-1-1990 C4529-A		
5-1-1990 C4529-A		
6-1-1990 C4529-A		
7-1-1990 C4529-A		
8-1-1990 C4529-A		
9-1-1990 C4529-A		
10-1-1990 C4529-A		
11-1-1990 C4529-A		
12-1-1990 C4529-A		
1-1-1991 C4529-A		
2-1-1991 C4529-A		
3-1-1991 C4529-A		
4-1-1991 C4529-A		
5-1-1991 C4529-A		
6-1-1991 C4529-A		
7-1-1991 C4529-A		
8-1-1991 C4529-A		
9-1-1991 C4529-A		
10-1-1991 C4529-A		
11-1-1991 C4529-A		
12-1-1991 C4529-A		
1-1-1992 C4529-A		
2-1-1992 C4529-A		
3-1-1992 C4529-A		
4-1-1992 C4529-A		
5-1-1992 C4529-A		
6-1-1992 C4529-A		
7-1-1992 C4529-A		
8-1-1992 C4529-A		
9-1-1992 C4529-A		
10-1-1992 C4529-A		
11-1-1992 C4529-A		
12-1-1992 C4529-A		
1-1-1993 C4529-A		
2-1-1993 C4529-A		
3-1-1993 C4529-A		
4-1-1993 C4529-A		
5-1-1993 C4529-A		
6-1-1993 C4529-A		
7-1-1993 C4529-A		
8-1-1993 C4529-A		
9-1-1993 C4529-A		
10-1-1993 C4529-A		
11-1-1993 C4529-A		
12-1-1993 C4529-A		
1-1-1994 C4529-A		
2-1-1994 C4529-A		
3-1-1994 C4529-A		
4-1-1994 C4529-A		
5-1-1994 C4529-A		
6-1-1994 C4529-A		
7-1-1994 C4529-A		
8-1-1994 C4529-A		
9-1-1994 C4529-A		
10-1-1994 C4529-A		
11-1-1994 C4529-A		
12-1-1994 C4529-A		
1-1-1995 C4529-A		
2-1-1995 C4529-A		
3-1-1995 C4529-A		
4-1-1995 C4529-A		
5-1-1995 C4529-A		
6-1-1995 C4529-A		
7-1-1995 C4529-A		
8-1-1995 C4529-A		
9-1-1995 C4529-A		
10-1-1995 C4529-A		
11-1-1995 C4529-A		
12-1-1995 C4529-A		
1-1-1996 C4529-A		
2-1-1996 C4529-A		
3-1-1996 C4529-A		
4-1-1996 C4529-A		
5-1-1996 C4529-A		
6-1-1996 C4529-A		
7-1-1996 C4529-A		
8-1-1996 C4529-A		
9-1-1996 C4529-A		
10-1-1996 C4529-A		
11-1-1996 C4529-A		
12-1-1996 C4529-A		
1-1-1997 C4529-A		
2-1-1997 C4529-A		
3-1-1997 C4529-A		
4-1-1997 C4529-A		
5-1-1997 C4529-A		
6-1-1997 C4529-A		
7-1-1997 C4529-A		
8-1-1997 C4529-A		
9-1-1997 C4529-A		
10-1-1997 C4529-A		
11-1-1997 C4529-A		
12-1-1997 C4529-A		
1-1-1998 C4529-A		
2-1-1998 C4529-A		
3-1-1998 C4529-A		
4-1-1998 C4529-A		
5-1-1998 C4529-A		
6-1-1998 C4529-A		
7-1-1998 C4529-A		
8-1-1998 C4529-A		
9-1-1998 C4529-A		
10-1-1998 C4529-A		
11-1-1998 C4529-A		
12-1-1998 C4529-A		
1-1-1999 C4529-A		
2-1-1999 C4529-A		
3-1-1999 C4529-A		
4-1-1999 C4529-A		
5-1-1999 C4529-A		
6-1-1999 C4529-A		
7-1-1999 C4529-A		
8-1-1999 C4529-A		
9-1-1999 C4529-A		
10-1-1999 C4529-A		
11-1-1999 C4529-A		
12-1-1999 C4529-A		
1-2000 C4529-A		
2-2000 C4529-A		
3-2000 C4529-A		
4-2000 C4529-A		
5-2000 C4529-A		
6-2000 C4529-A		
7-2000 C4529-A		
8-2000 C4529-A		
9-2000 C4529-A		
10-2000 C4529-A		
11-2000 C4529-A		
12-2000 C4529-A		
1-2001 C4529-A		
2-2001 C4529-A		
3-2001 C4529-A		
4-2001 C4529-A		
5-2001 C4529-A		
6-2001 C4529-A		
7-2001 C4529-A		
8-2001 C4529-A		
9-2001 C4529-A		
10-2001 C4529-A		
11-2001 C4529-A		
12-2001 C4529-A		
1-2002 C4529-A		
2-2002 C4529-A		
3-2002 C4529-A		
4-2002 C4529-A		
5-2002 C4529-A		
6-2002 C4529-A		
7-2002 C4529-A		
8-2002 C4529-A		
9-2002 C4529-A		
10-2002 C4529-A		
11-2002 C4529-A		
12-2002 C4529-A		
1-2003 C4529-A		
2-2003 C4529-A		



POLE HEIGHT	DIMENSIONS									
	A'	B'	C'	D'	E'	F'	G'	H'		
80'	10'-0"	34'-0"	17'-0"	45'-6"	70'-0"	51'-0"	75'-6"			44'-0"
85'	10'-6"	37'-0"	18'-6"	50'-0"	46'-6"	55'-6"	80'-0"			48'-0"
90'	11'-0"	40'-0"	20'-0"	54'-6"	79'-0"	60'-0"	84'-6"			53'-0"
95'	11'-0"	43'-6"	21'-6"	59'-6"	84'-0"	65'-0"	89'-6"			58'-0"
100'	11'-0"	47'-0"	23'-0"	64'-6"	89'-0"	70'-0"	94'-6"			63'-0"

NOTES:
 1. Poles shall be Class H-1.
 2. On uneven terrain the pole set above and the remaining two poles shall be framed level with it.
 3. All poles and pole attaching hardware shall be grounded. Install Ground Wire Clips 2' apart below strut guys and 1' apart above strut guys.
 See Drawing T-0-3001 for Pole Grounding Details.



GUYING PLANS
TYPE C4529-C
20°-30° ANGLE STRUCTURE
345 KV CONSTRUCTION
SOUTHWESTERN PUBLIC SERVICE CO.
AMARILLO, TEXAS

SWP/SCO No. T-0-3004

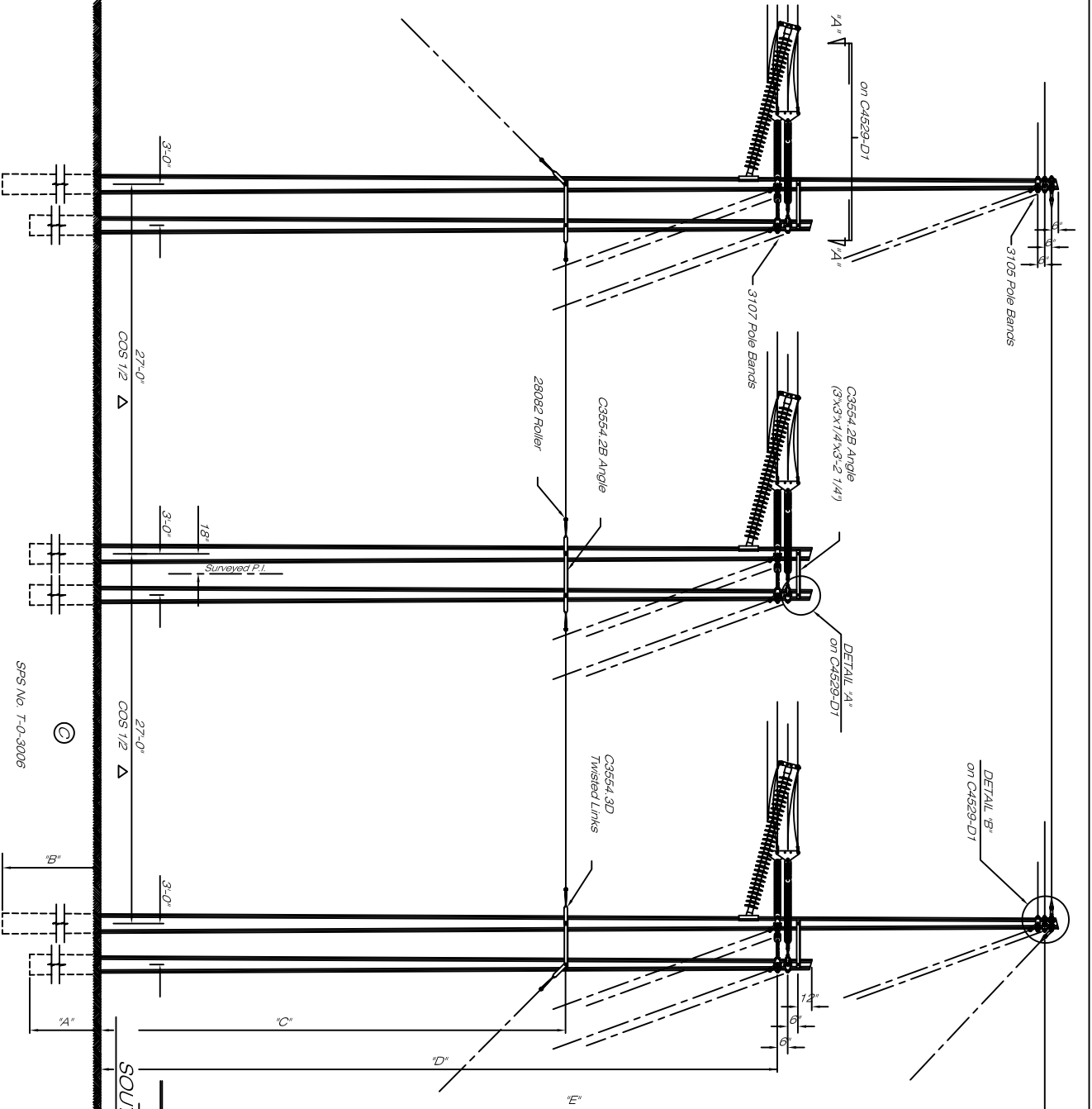
CONFIDENTIAL
 This document contains information that is proprietary to Hughes Brothers, Inc. and shall not be disclosed or used except as expressly authorized.

Revision	Date
1	7-90
2	1-92

HUGHES BROTHERS, INC.
 210 N. 13th Street - Suite 1c 8047
 PROTHIERES

Drawn
 Date ● 2-1990 HEB

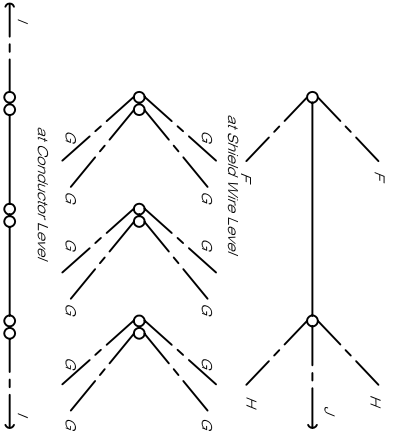
Date Printed
C4529-C



POLE HEIGHT	DIMENSIONS									
	A'	B'	C'	D'	E'	F'	G'	H'	I'	J'
60'-80'	8'-0"	10'-0"	34'-0"	50'-0"	68'-6"					
68'-85'	8'-6"	10'-6"	37'-0"	54'-6"	74'-0"					
70'-90'	9'-0"	11'-0"	40'-0"	59'-6"	78'-6"					
75'-95'	9'-6"	11'-6"	45'-0"	64'-6"	83'-0"					

POLE HEIGHT	DIMENSIONS									
	F'	G'	H'	I'	J'	K'	L'	M'	N'	O'
60'-80'	3'-0"	5'-6"	69'-6"	40'-0"	75'-6"					
68'-85'	3'-0"	6'-0"	74'-0"	45'-0"	80'-0"					
70'-90'	3'-0"	6'-6"	78'-6"	46'-0"	84'-6"					
75'-95'	3'-0"	7'-0"	83'-0"	49'-0"	89'-0"					

- NOTES:
1. Static Poles shall be Class H-1.
 2. All other Poles shall be Class H-2.
 3. Conductor attachments on all 3 sets of Poles shall be level with each other.
 4. Poles shall be level with each other.
 5. All Poles and all Hardware attached to Poles shall be grounded. Ground Wire Clips shall be 1' apart above strut guys and 2' apart below strut guys.
- See Drawing T.O.-3001 for Pole Grounding Details.



GUYING PLANS
 Note: See C4529-D1 for Enlargement
 Detail of Guying Plan

TYPE C4529-D
 60°-90° ANGLE STRUCTURE
 34.5 KV CONSTRUCTION
 SOUTHWESTERN PUBLIC SERVICE CO.
 AMARILLO, TEXAS

SPS No. T-O-3006

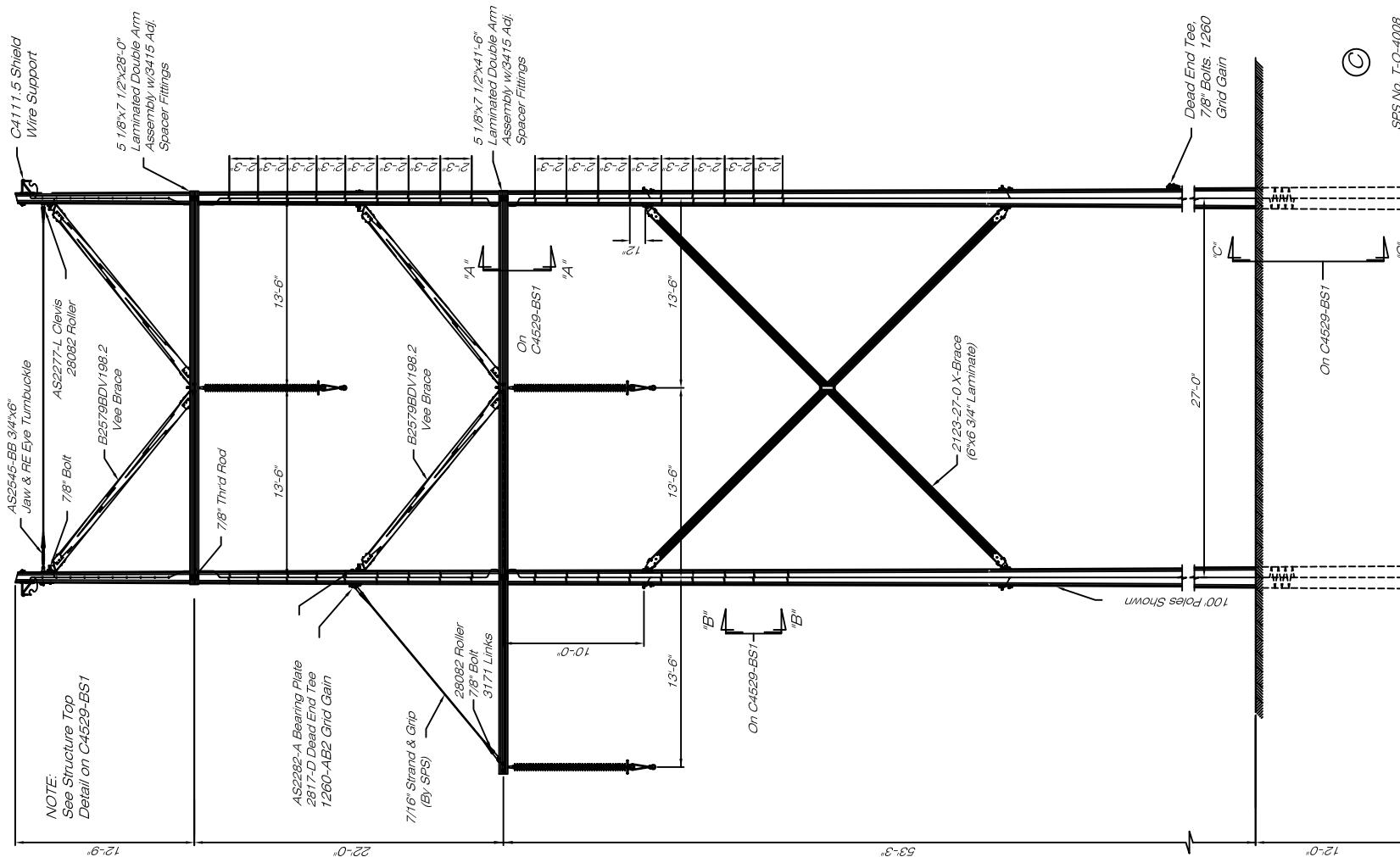
CONFIDENTIAL
 This document contains information that is confidential and shall not be disclosed or used except as expressly authorized.

Revision	Date
1	8-92

HUGHES BROTHERS, INC.
 210 N. 13th Street - Suite 16 804W
 BROOKERS

Drawn
 Date 2-1990 HBI

Date Printed
 C4529-D



©

SPS No. T-O-4008

NOTES:

1. Poles shall be Class 1 unless specified otherwise.
2. Pole hole depth **MUST** be accurate. When holes do not allow structure to be even and level, the Deep Hole shall be backfilled and thoroughly tamped to proper depth.
3. Ground Wire Clips shall be two (2) feet apart except for above bottom of top x-brace to pole top where they shall be one (1) foot apart.
4. There shall be no more than ONE splice in the Ground Wire above groundline and NO splices below groundline.
5. When installing Ground Wire Clips avoid cracks and checks. Clips **MUST** be installed in solid wood.
6. Single Piece Grounding Loops of No. 6 S.D. Copper **SHALL** be installed as shown on elevation and in Section "B-B".
7. All catalog numbers shown are Hughes Brothers unless otherwise stated.

TYPE C4529-T
TRANSPOSITION STRUCTURE
345 KV CONSTRUCTION
SOUTHWESTERN PUBLIC SERVICE CO.
AMARILLO, TEXAS

CONFIDENTIAL
 This document includes information that is proprietary to Hughes Brothers, Inc., and shall not be disclosed or used except as expressly authorized.

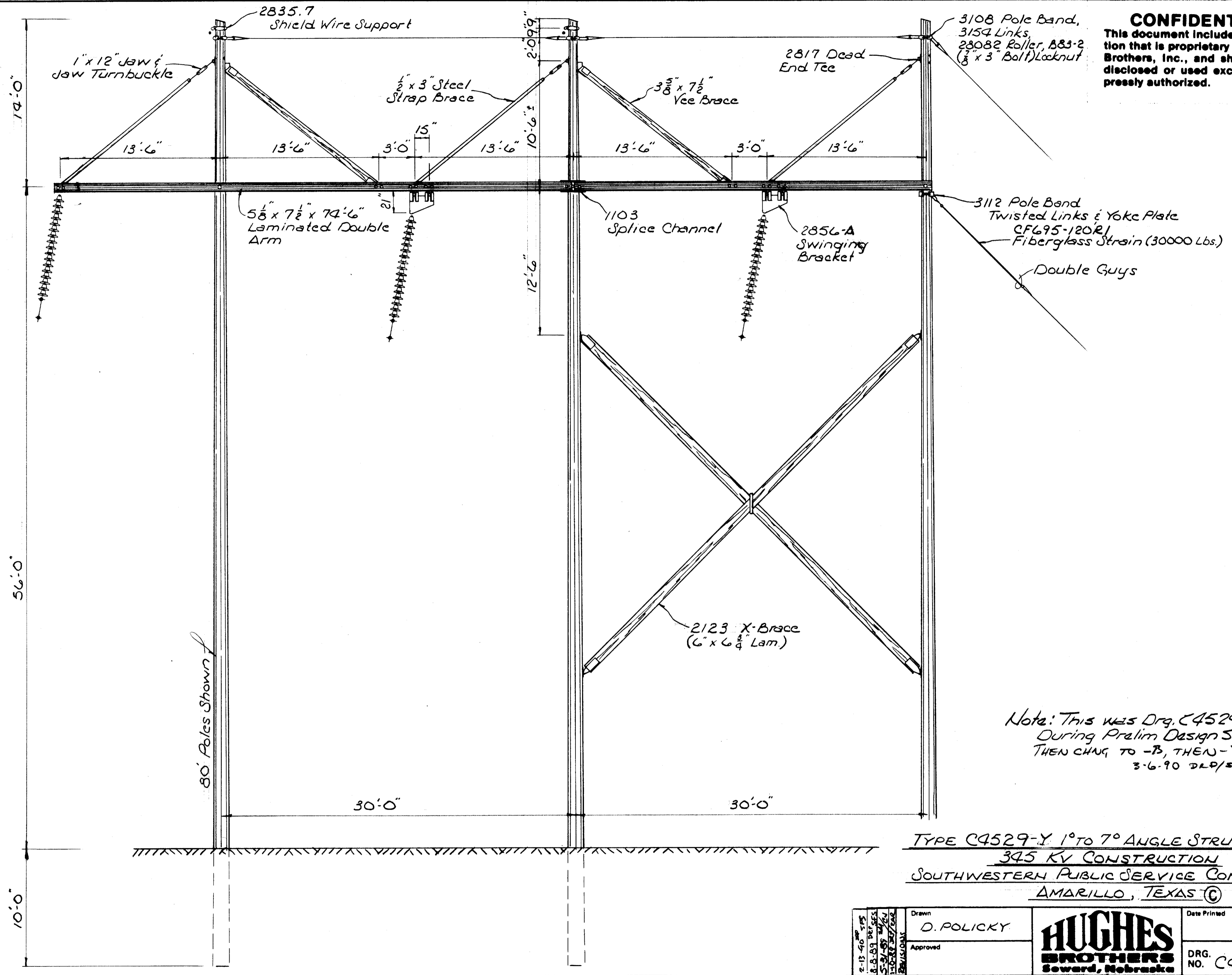
Revision
 7-15-92

HUGHES BROTHERS
 HUGHES BROTHERS, INC.
 210 N 13TH STREET - SEWARD, NE 68434

Drawn
 Date 2-1990 HBI

Date Printed
 C4529-T

CONFIDENTIAL
 This document includes information that is proprietary to Hughes Brothers, Inc., and shall not be disclosed or used except as expressly authorized.



Note: This was Drg. C4529-0
 During Prelim Design Stages.
 THEN CHNG TO -B, THEN -Y
 3-6-90 DLP/SFS

TYPE C4529-Y 1° TO 7° ANGLE STRUCTURE
 345 KV CONSTRUCTION
 SOUTHWESTERN PUBLIC SERVICE COMPANY
 AMARILLO, TEXAS ©

2-15-40 SFS 8-8-89 DER/SFS 5-2-88 SFS 12-28-87 SFS 2-15-87 SFS	Drawn D. POLICKY	HUGHES BROTHERS Seward, Nebraska	Date Printed / /
	Approved		DRG. NO. C4529-Y