

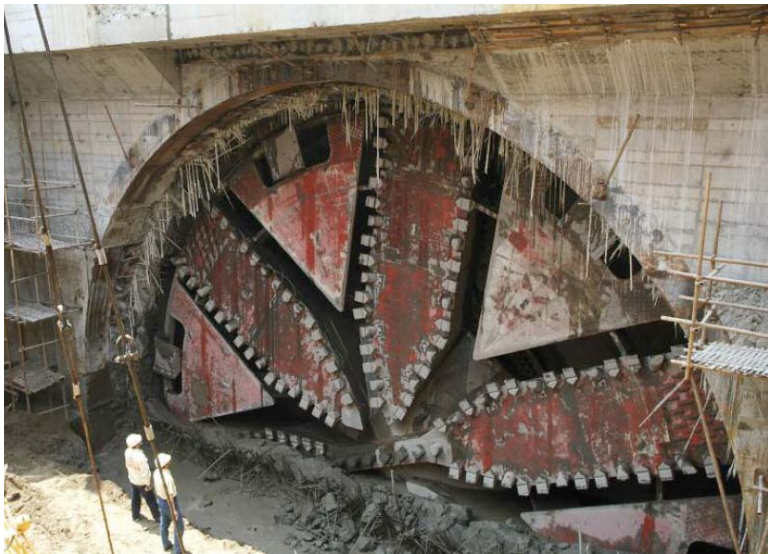
Aslan 100 GFRP

Reinforcement for MTR Softeyes in Shanghai, China

The first of the pair of **15.43m** diameter TBMs, the world's largest excavating road tunnels below the Yangtze river, at Changxing Island near Shanghai, broke the shield hole through on may 21, 2008, which was equipped with **Aslan GFRP** Soft eye. The tunnels are being built by Shanghai Changjing tunnel & Bridge Construction Development co Ltd to link Changxing Island, in the Yangtze, with the mainland at Pudong. The tunnels are part of a larger transport project ot link Pudong with another river island – Chongming. With the Aslan GFRP Soft eye technique, the shield was holed through by five months ahead of schedule.

The soft eye is fabricated by Aslan 100 GFRP reinforcement, which comes in different diameters and can be supplied as stirrups.

Aslan can offer design assistance to the engineers



Aslan Pacific Ltd.

Address: 1901, Tung Wai Commercial Building,
109 Gloucester Road, Hong Kong
Tel: (852) 2511 8236 Fax: (852) 2519 0852
Email: info@aslanpacific.com

Web: www.aslanpacific.com.hk

Aslan® FRP