

# HUGHES BROTHERS FRAMING MATERIALS



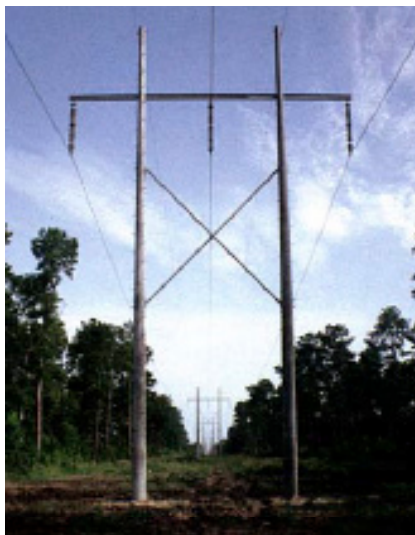
ANY KIND OF FRAMING FOR ANY KIND OF POLE



Hughes Brothers has the engineering knowledge and experience for your framing needs. Whether it's new construction or maintenance on older towers, we have solutions that are tested, proven, and customized for your requirements. Over the years, we have been known for our wood framing innovations, but long ago we expanded into other construction methods. Hughes Brothers: wood and steel framing material for any kind of pole.



Wood framing up to 345kv



Galvanized steel unbraced arm on concrete poles



Steel truss on wood poles, shipped pre-assembled for quick installation

# HB FRAMING MATERIALS

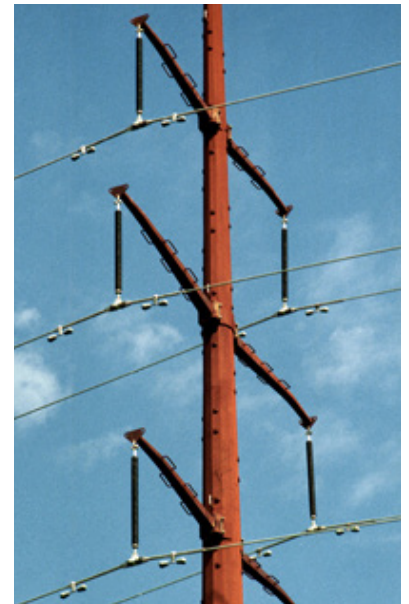
## DAVITS



Galvanized steel davits on spun concrete pole

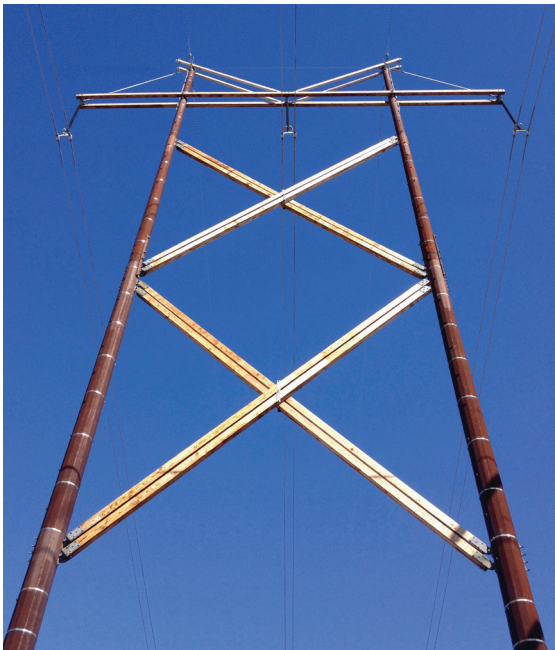


Weathering steel davits on round wood pole

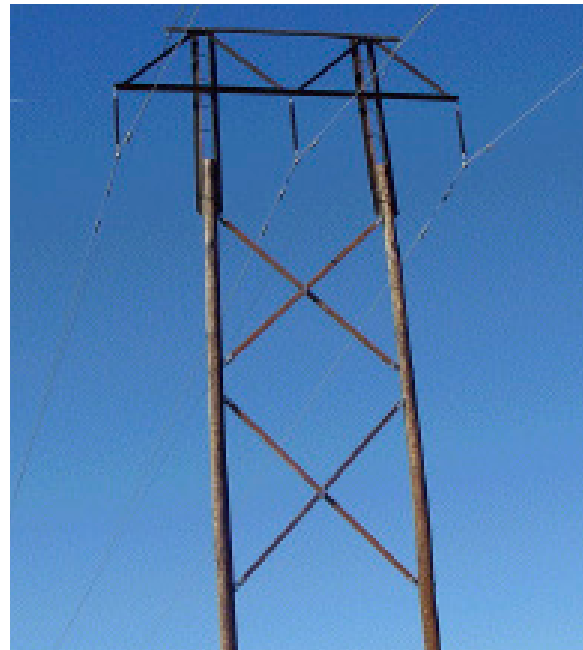


Weathering steel davits on weathering steel pole

## SPECIALTY DESIGNS



Wood framing on steel poles



Steel re-framing truss on wood poles

American-made



American-engineered

# ANY KIND OF FRAMING FOR ANY KIND OF POLE

## SPECIALTY DESIGNS



345kv "live" re-framing with Hughes Brothers' steel truss

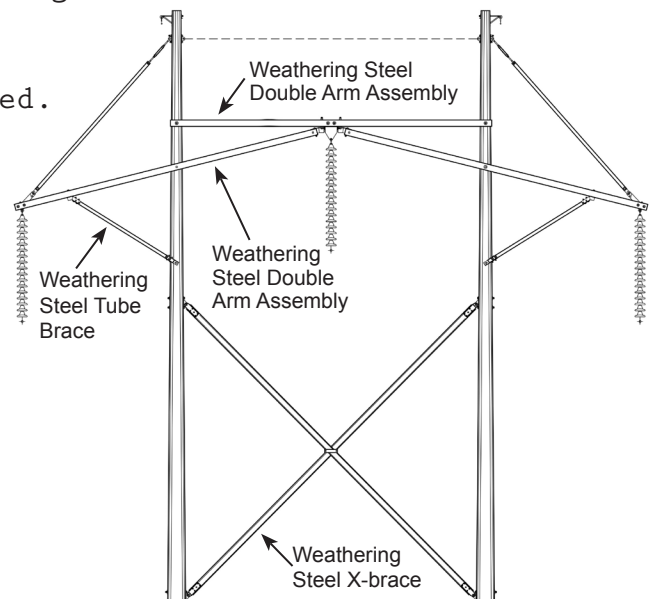


## UPGRADES



Aging spar-arm structure, shorter service life due to eccentricities of loads and sub-standard framing.

Upgrade an aging spar-arm structure with Hughes Brothers' engineered k-frame materials. Salvage the existing poles by using our custom-engineered wood or steel framing to strengthen the structure and extend the life of your line. Existing phase spacings and configurations can easily be maintained.



# HB FRAMING MATERIALS



Specialty steel framing for any kind of pole.



Bundling steel or wood framing for easy inventory management. One bundle = one structure.

YOUR AREA SALES REP  
FOR HUGHES BROTHERS IS:

